



CODE
HSALCARM

Lodge

La Casona:

5

Quinta El Carmen:

4

Suite Quinta El Carmen:

1

Web Site:

[www.elcarmenestate.com/
cafe-ataco.html](http://www.elcarmenestate.com/cafe-ataco.html)



El Carmen Lodge

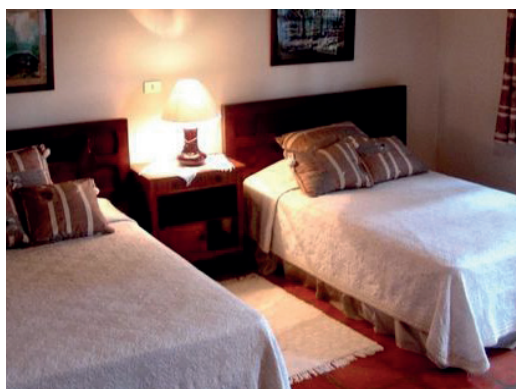
Ataco, Flower Route

DESCRIPTION:

El Carmen Lodge is located at 1300 meters above sea level within a coffee forest of amazing beauty in the western mountains of El Salvador, in the Apaneca - Ilamatepec mountain range. It is located two blocks away from the picturesque village of Concepción de Ataco. The hotel offers two lodging options: La Casona, which is the original plantation house, built over 100 years ago, kept in the original condition and upgraded with all the comforts; or you can stay at La Quinta, a country villa with a contemporary farm environment, for the entire family or group of friends. The hotel is located 2 hours and 30 minutes northwest from Comalapa International Airport (SAL).

GENERAL SERVICES & LEISURE FACILITIES:

Food service is available as well as staff to serve guests. It offers adventure on site activities such as: zipline tour, play ground for kids, ponies, mule or horseback rides, coffee plantation and mill, ATV tours, walking panoramic trails, flowers and plants.



ROOMS AND FACILITIES:

The hotel room guest offers 2 full size beds and private bathroom with hot water. The Suite Quinta El Carmen also offers terrace, living room with two sofa beds and walk in closet.

DINING AND ENTERTAINING:

CAFÉ- TIN restaurant.



El Carmen Lodge, Ataco, Flower Route

Pictures

